

## CliniLever® Lead Safe™ Stainless Steel Shower Mixer

### PRODUCT CODES:

- **TM-SHWX**



### SPECIFICATIONS

- Lead Safe™ stainless steel construction
- Easy temperature blending and operation to ensure comfort and safety for the user
- Low maintenance
- Clean hygienic design

**IMPORTANT:** All CliniLever® Shower Mixers are tested in accordance with AS/NZS 3718 and leave our premises in good working order.

As 'lead free' is not currently defined by law in Australia and New Zealand, we have based our definition of Lead Safe™ on the requirements of s1417 of the USA's Safe Drinking Water Act (SDWA) and the relevant US standards NSF61 / NSF372. The SDWA defines 'lead free' as "not more than a weighted average of 0.25% lead when used with respect to the wetted surface of pipes, pipe fittings, plumbing fittings and fixtures".

### TECHNICAL DATA

Inlet	½" BSP - Female	
Outlet	½" BSP - Female	
Headwork	Ceramic Disc	
Working Pressure Range (kPa)	Min	50
	Max	500
Working Temperature Range (°C)	Min	5
	Max	80
Nominal Flow Rate (LPM)	N/A	
Construction	Stainless Steel	
Finish	Stainless Steel	

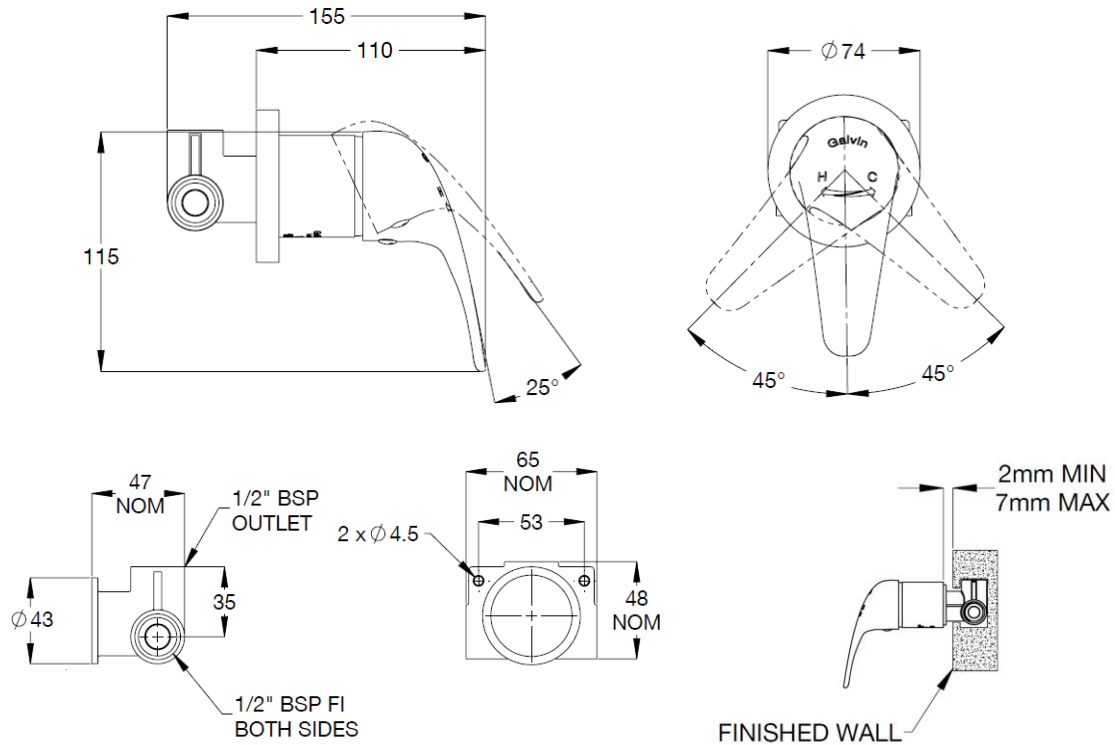
**NOTE:** Galvin Engineering continually strive to improve their products. Specifications may change without notice.



## Product Installation Guideline

Version 1,14<sup>th</sup> April 2020, 2 of 4

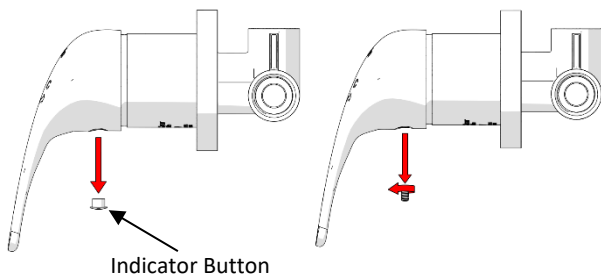
### DIMENSIONS



Rough-in Dimensions

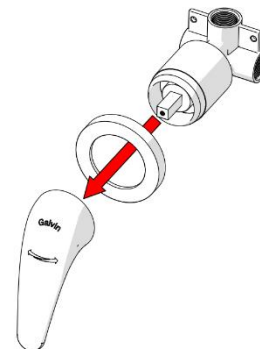
### INSTALLATION

**INSTALLATION COMPLIANCE:** Galvin Engineering products must be installed in accordance with these installation instructions and in accordance with AS/NZS 3500, the PCA and your local regulatory requirements. Water and/or electrical supply conditions must also comply to the applicable national and/or state standards. Failing to comply with these provisions shall void the product warranty and may affect the performance of the product.



#### 1. Remove Handle

- Remove the indicator button as shown.
- Using a hex key, remove the grub screw.



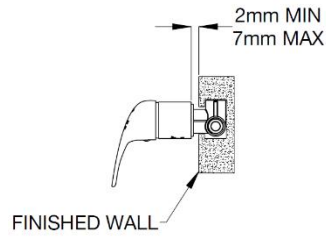
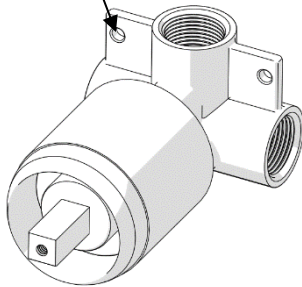
#### 2. Remove Handle & Flange

- Remove the handle.
- Carefully remove flange from the mixer assembly.
- Care should be taken to avoid scratching the mixer body.

## Product Installation Guideline

Version 1, 7 May 2020, 3 of 4

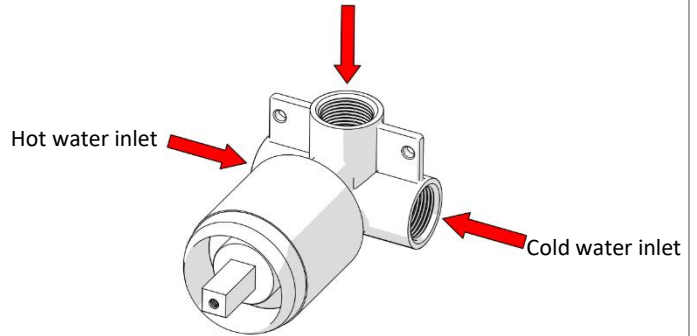
Mounting point



### 3. Secure Mixer Body

- To allow proper fitment of the wall flange, allow a gap between 2mm & 7mm (as shown) between the finished wall and the rear of the main body.
- Secure the mixer body using the mounting points.

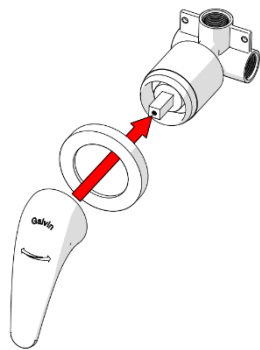
Mixed water outlet



### 4. Fit Water Connections

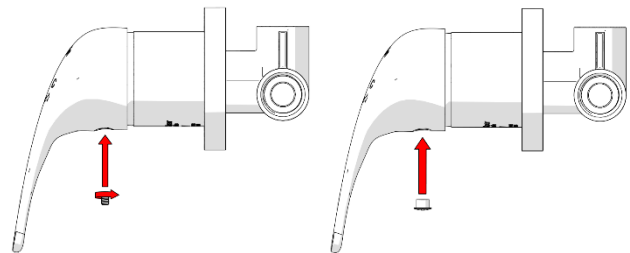
- Ensure water supply lines are flushed before connecting.
- Fit the water connections as shown.
- Ensure thread tape/sealant is used.

**Note: This wall shower is not fitted with a flow restrictor. Never operate without a flow restrictor, as outlet will deliver full mains pressure with unrestricted flow.**



### 5. Fit Handle & Flange

- Re-fit handle & flange ensuring care is taken to avoid scratching the mixer body.



### 6. Secure Handle & Fit Indicator Button

- Using the supplied hex key, fit the grub screw as shown and secure the handle.
- Fit the indicator button as shown.



### 7. Test

- Once the shower mixer has been fitted, turn on mains water and check for leaks and correct operation.

**TROUBLESHOOTING**

PROBLEM	CAUSE	RECTIFICATION
Wall shower is dripping water	Headworks are worn or damaged	Remove and inspect the headworks, remove debris and/or replace o-rings or parts if damaged
Leak from behind body	Insufficient sealant	Apply more thread tape or sealant to create a better seal

**WARRANTY**

The warranty set forth herein is given expressly and is the only warranty given by the Galvin Engineering Pty Ltd. With respect to the product, Galvin Engineering Pty Ltd makes no other warranties, express or implied. Galvin Engineering Pty. Ltd. hereby specifically disclaims all other warranties, express or implied, including but not limited to the implied warranties of merchantability and fitness for a particular purpose.

Galvin Engineering Pty Ltd products are covered under our manufacturer’s warranty available for download from [www.galvinengineering.com.au](http://www.galvinengineering.com.au) Galvin Engineering Pty Ltd expressly warrants that the product is free from operational defects in workmanship and materials for the warranty period as shown on the schedule in the manufacturer’s warranty. During the warranty period, Galvin Engineering will replace or repair any defective products manufactured by Galvin Engineering without charge, so long as the terms of the Manufacturer’s warranty are complied with.

The remedy described in the first paragraph of this warranty shall constitute the sole and exclusive remedy for breach of warranty, and Galvin Engineering Pty Ltd shall not be responsible for any incidental, special or consequential damages, including without limitation, lost profits or the cost of repairing or replacing other property which is damaged if this product does not work properly, other costs resulting from labour charges, delays, vandalism, negligence, fouling caused by foreign material, damage from adverse water conditions, chemical, electrical or any other circumstances over which Galvin Engineering has no control. This warranty shall be invalidated by any abuse, misuse, misapplication, improper installation or improper maintenance or alteration of the product.